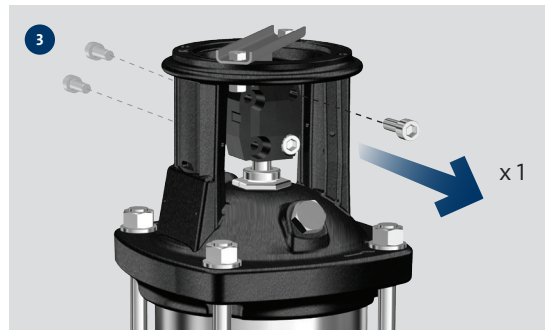
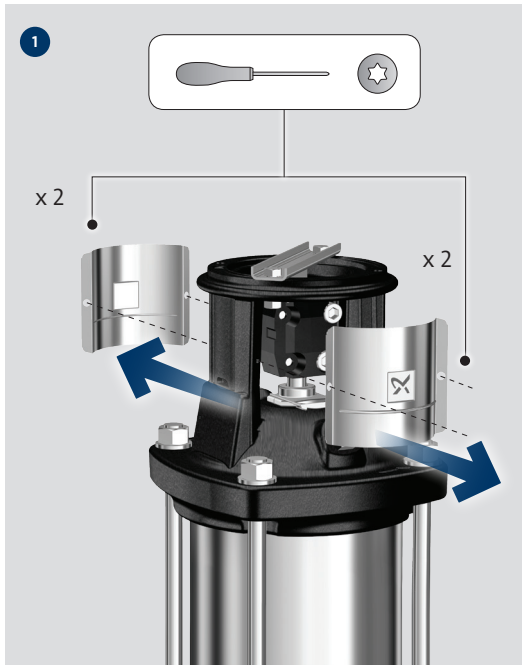
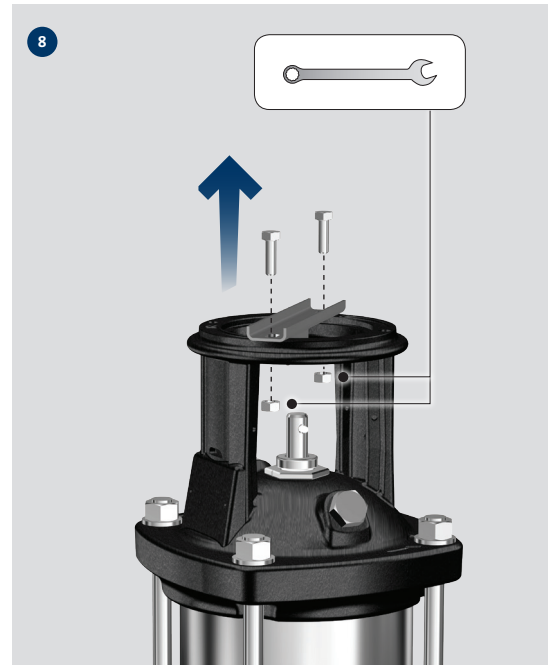


Removal of

TRANSPORT BRACKET





10



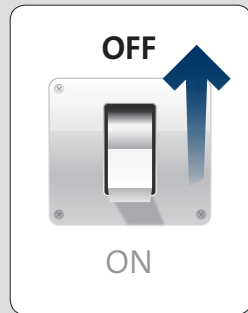
Dimension	Torque [Nm]	Lubricant
M6	10	Tread-Eze
M8	12	
M12	40	
M16	80	

CCW



12

OFF



11



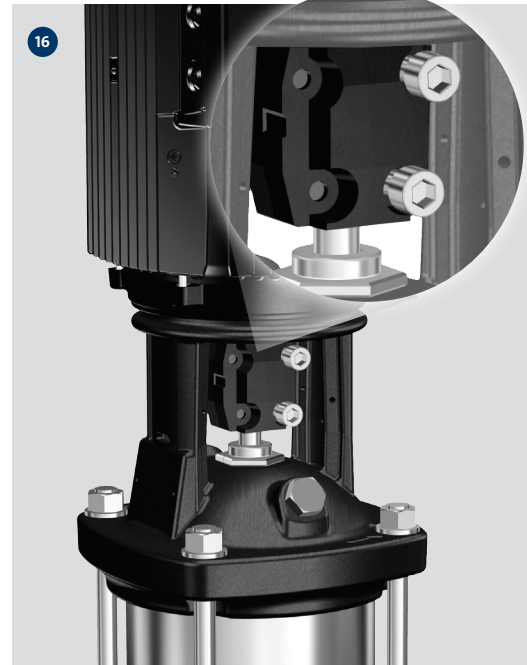
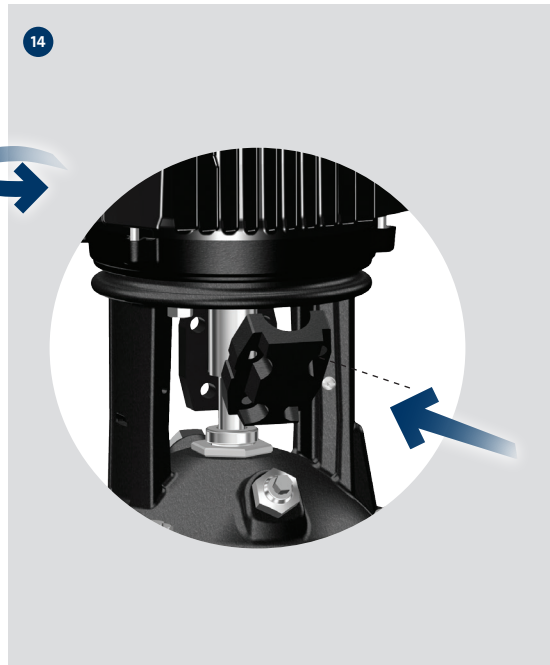
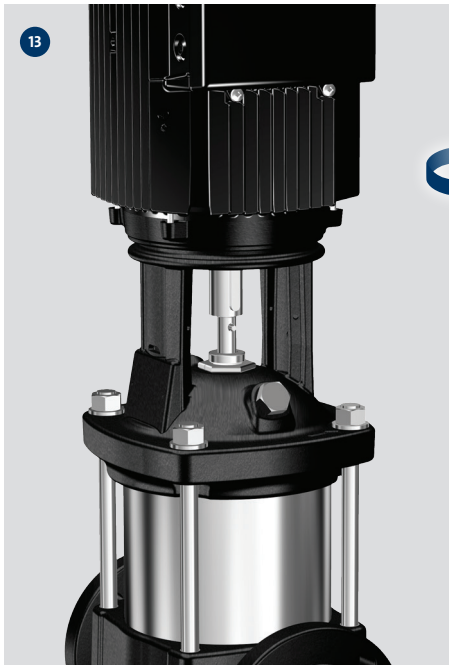
15 sec.

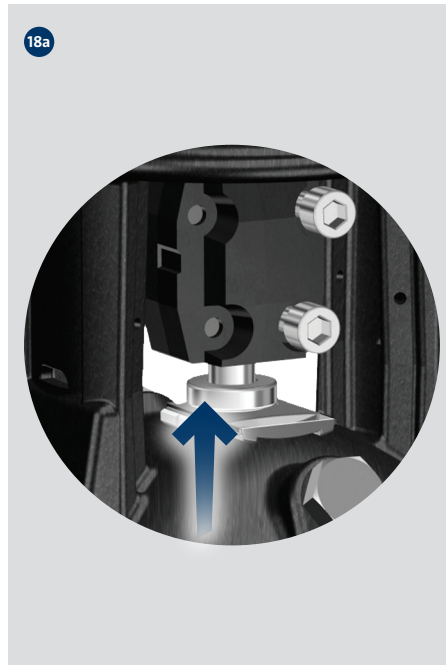
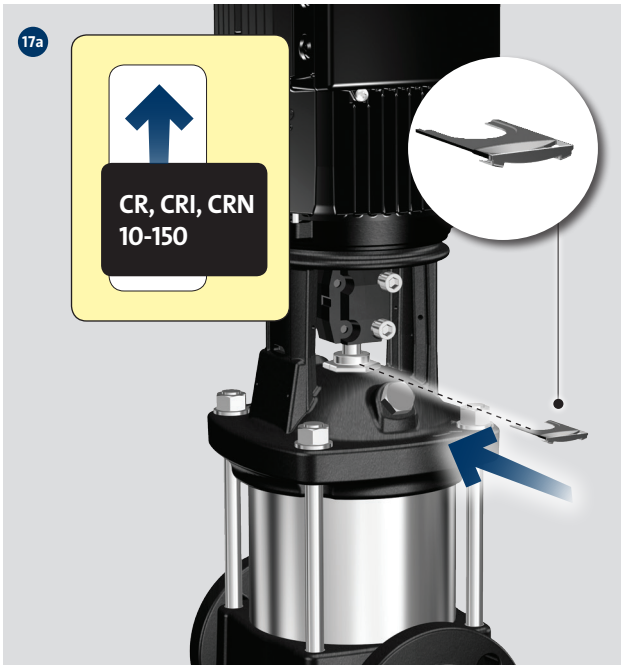


CRN SF

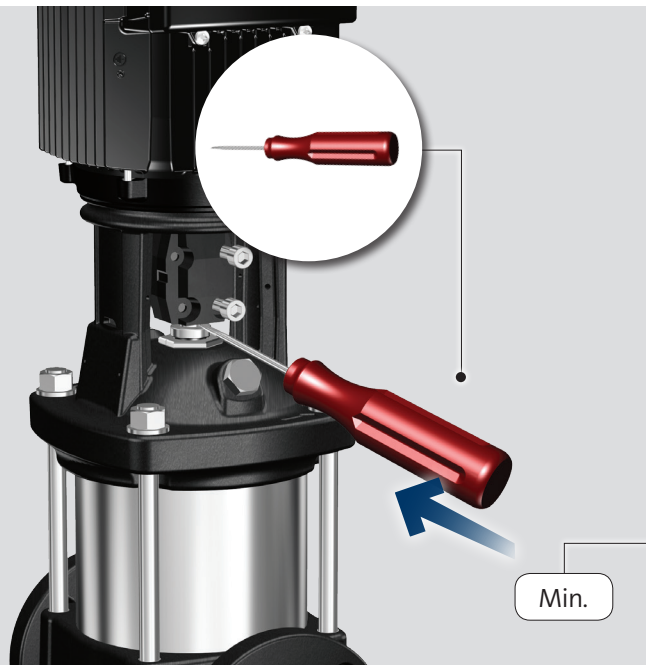
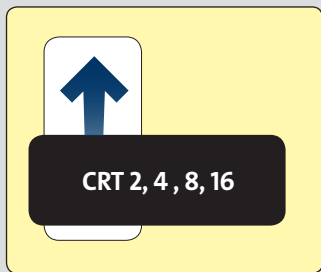
CW



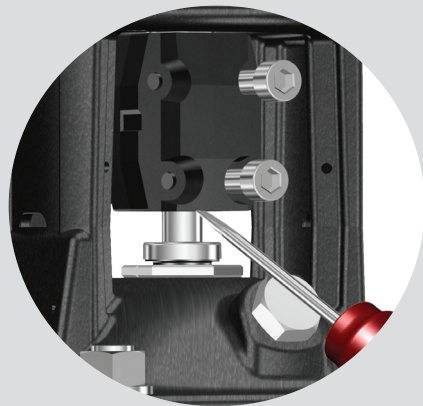




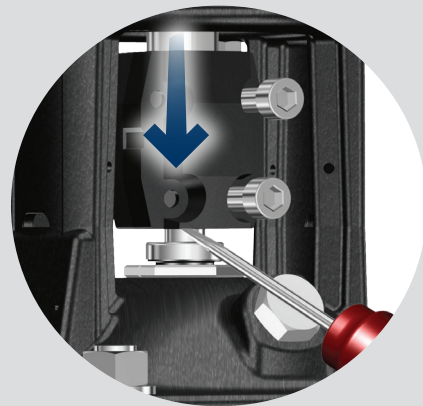
17b



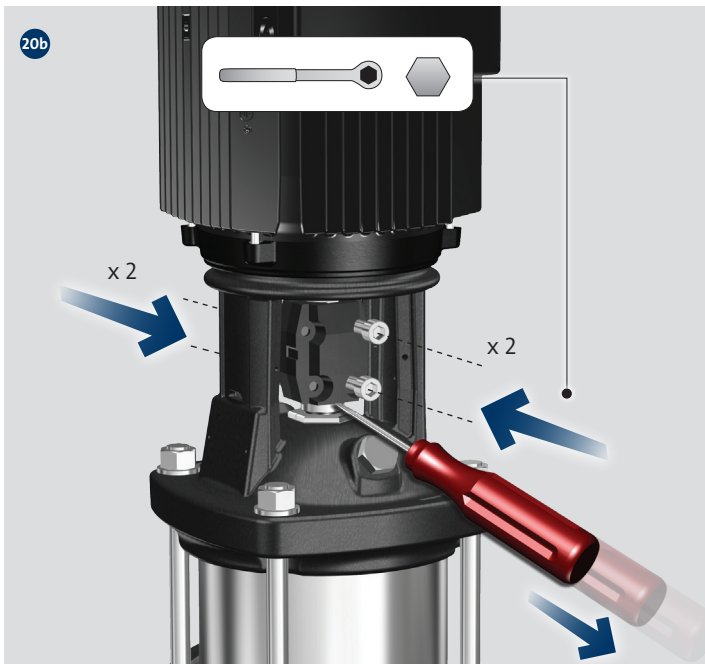
18b



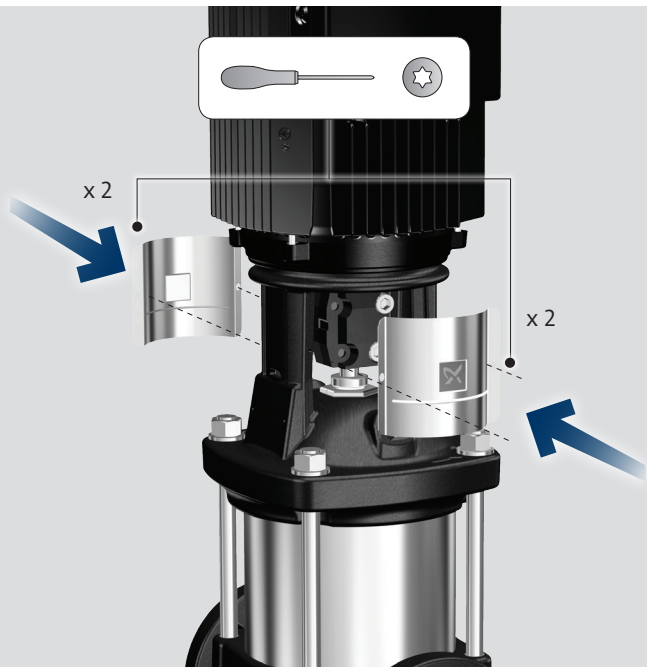
19b



$$\frac{\text{Max.} - \text{Min.}}{2} = \text{lift}$$



21



22



be think innovate

96527550 0917

ECM: 1218314

GRUNDFOS Holding A/S
Poul Due Jensens Vej 7
DK-8850 Bjerringbro
Tel: +45 87 50 14 00
www.grundfos.com

GRUNDFOS 

The name Grundfos, the Grundfos logo, and be think, innovate
are registered trademarks owned by Grundfos Holding A/S
or Grundfos A/S, Denmark. All rights reserved worldwide.